

# INTERFLEX

l a s e r e n g r a v e r s



ENGRAVING QUALITY THROUGH EXPERIENCE AND TECHNOLOGY

## Our History



Interflex Headquarters, Spartanburg, South Carolina

**Interflex Laser Engravers** began in 1995 with a vision to provide the flexographic industry with superior service and quality of ceramic anilox engravings. Since inception, **Interflex** has built a cohesive team from diverse backgrounds within the engraving industry. **Interflex** strives to provide its customers with the highest level of service, as well as exceeding their expectations. **Interflex** continually seeks process improvement through research and investment in the latest technology.

Our main headquarters is located in Spartanburg, South Carolina along with technical offices in the northeast, south, and midwest. Our National Sales Office and tissue/towel embossing lab lines are located in Green Bay, Wisconsin.

Today, **Interflex** is a leader in the flexographic industry as a supplier of ceramic anilox engravings and the paper tissue/towel industry for laser engraved embossing rolls and sleeves.

### Check out our new app!



Download our Interflex Anilox Laser Calcs App to handle all of the calculations in your Anilox process. The app will quickly calculate coating weight, plate LPI, and metric/inch. Plus you can easily access contact information for our Technical Sales Team and our address.

**Simply search for Interflex Laser in the App Store or Google Play!**

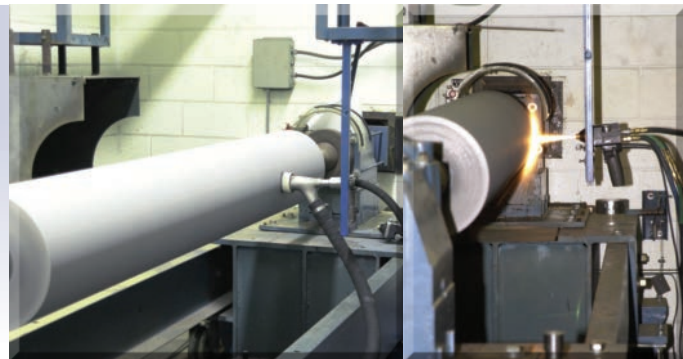


## Manufacturing Process

Each incoming roll is inspected for repair needs and diameter runout via micrometer.



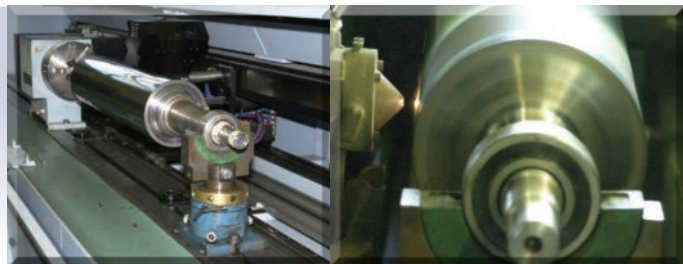
The surface is then prepared for correct size and appropriate corrosion resistance. This fresh surface is then thermally sprayed with a plasma process containing ceramic particulate.



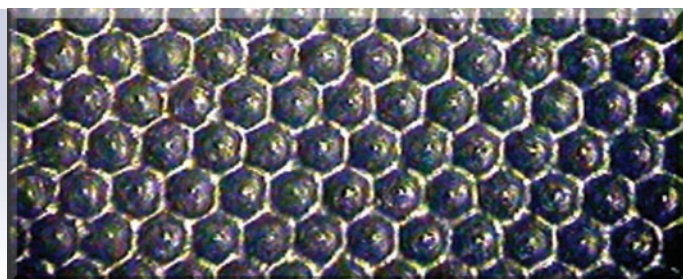
The ceramic roll is then polished to a 2.00 Ra mirror finish via a vibrating diamond head.



The polished roll is then mounted on the latest technological laser engraving machine, checked for a tolerance of .0002 TIR, and the roll surface is engraved to the desired specification.



The final product undergoes a series of pass/fail inspection criteria before being shipped to the customer.



## Gravure / Coating Applications

### Gravure

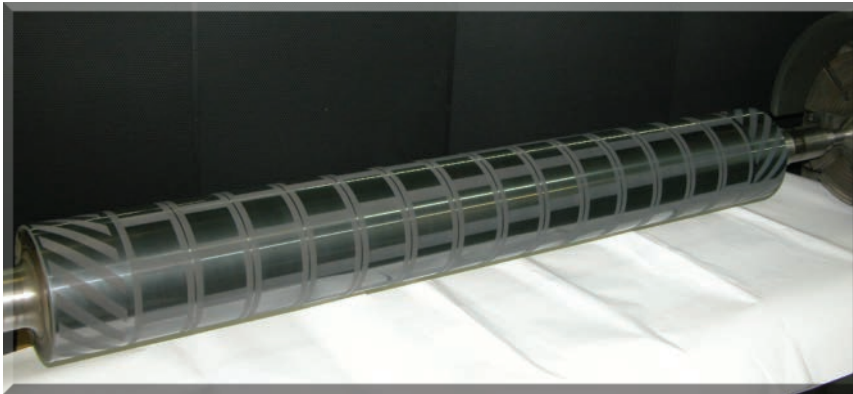
Laser engraved ceramic gravure coating rolls are a specialty service provided by Interflex Laser Engravers. Our experience with handling graphics, coupled with our background in rotogravure and surface finishing, now offer the coating industry a robust solution to the problems associated with conventional copper and chrome engravings.

### Question

Are you having problems with your coating consistency or rolls de-chroming in the coating process? How much are you spending on de-chrome / re-chrome and or possible re-engage due to these problems?

### Solution

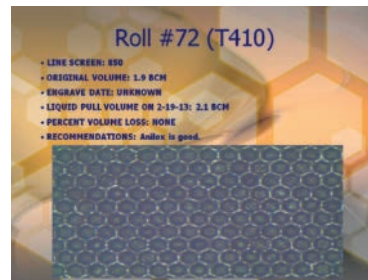
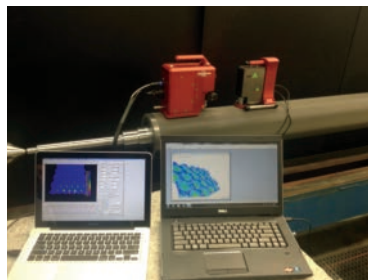
Try a laser engraved ceramic coating for a much more consistent coat weight and 10x the process life compared to conventional chrome-plated copper engravings.



### Sales-Technical Service

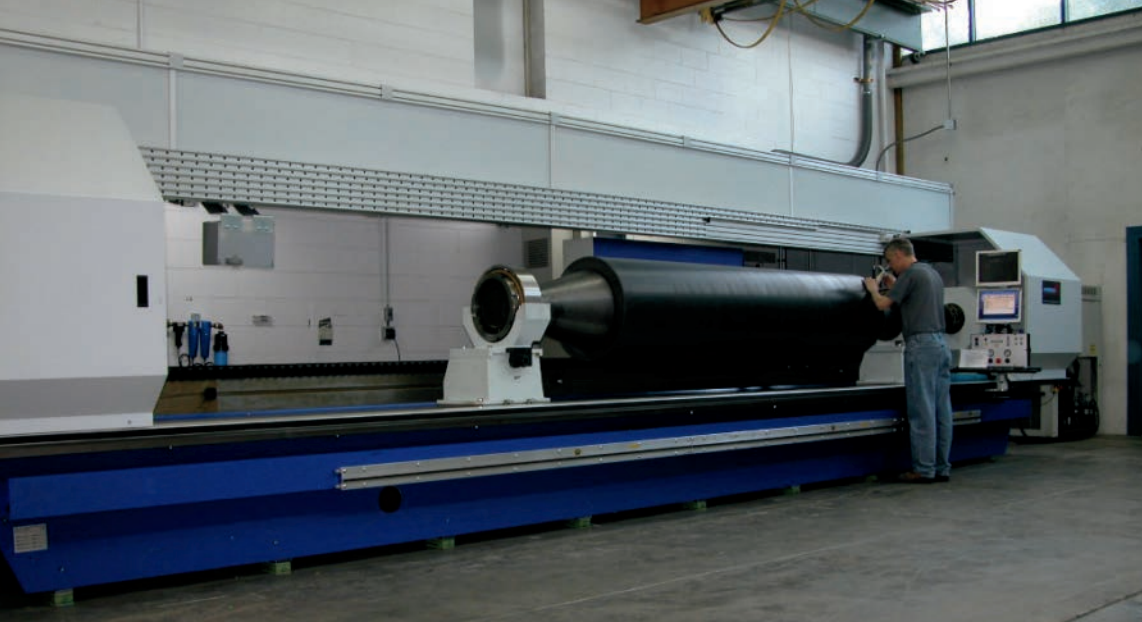
Each team can perform roll audits, measure roll statistics, and provide a site visit. Each visit results in a deliverable PowerPoint presentation with a photographic record of the visit, and values.

The plant in Spartanburg, SC also has a technical staff that is on call for our customers and sales team to assist in technical support.



QC Measurements - Conventional Liquid Volume - Electronic 3DQC & AniCam





### Laser Specification Capability

Roll Outside Diameter (OD) Maximum.....39.0 Inches

Engraving Face Maximum.....236.0 Inches

Total Tool Length Maximum.....275.0 Inches

Tool Weight Maximum.....15000.0 Pounds

### Experienced Engravers Utilizing the Latest Technology and offering the Highest Quality

#### Interflex Laser Engravers

provides industry-leading products in High Definition Anilox™ (HD Anilox™) roll engravings.

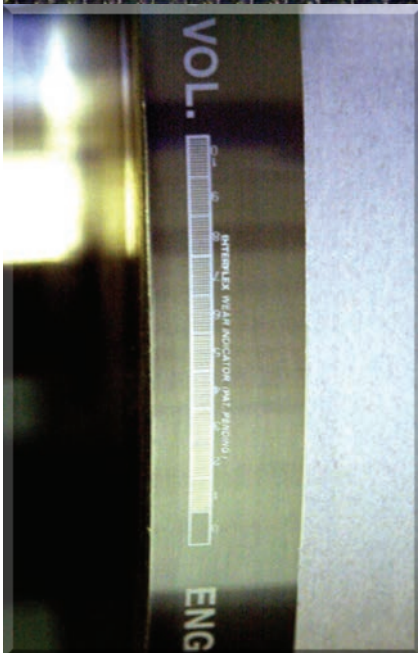
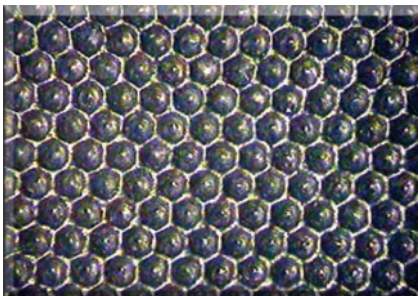
HD Anilox are manufactured using the latest in fiber optic engraving technology.

Customers have reported that they print much cleaner using High Definition Anilox™ rolls and have experienced less press downtime to clean plates resulting in higher levels of quality and productivity.

\*High Definition Anilox® Reg. No. 3,263,511

\*HD Anilox® Reg. No.3,166,908

**Interflex** also offers our Patented Volume Control Indicator that monitors ink volumes, wear, and plugging.





**Corporate Headquarters**

175 Tradd Street  
Spartanburg, SC 29301  
Phone: (864) 576-1042  
Toll Free: (800) 624-1985  
Fax: (864) 576-1119  
www.laserengrave.com

**Interflex National  
Sales Office & Technical Support**

2830 Curry Court  
Green Bay, WI 54311  
TOLL FREE (800)-624-1985

Our technical support team spans  
six offices in the United States,  
located in:

Atlanta, GA • Fort Wayne, IN  
Green Bay, WI • Louisville, KY  
Philadelphia, PA • Spartanburg, SC

LPI 60° & 30°	Volume (BCM)	
	Std	Max
75	30.0	50.0
100	25.0	35.0
120	20.0	32.0
150	15.0	25.0
180	14.0	22.0
220	10.0	15.0
260	8.0	13.0
300	7.5	12.5
360	7.0	10.1
400	5.5	8.0
460	5.0	8.0
500	4.2	7.5
550	4.0	6.9
600	3.5	6.5
700	3.0	5.2
800	2.8	4.2
900	2.5	3.6
High Definition Anilox		
1000	2.2	3.6
1100	2.0	3.2
1200	2.0	2.8
1300	1.6	2.4
1400	1.5	2.0
1500	1.4	1.8
1600	1.2	1.7

**ENGRAVING QUALITY THROUGH EXPERIENCE AND TECHNOLOGY**